

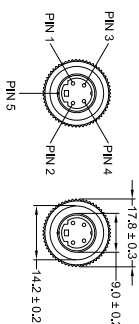
TABLE 1: BE-90XC CAMERA KIT OPTIONS

PART NO.	MODEL NO.	DESCRIPTION
5277	BE-900C	CAMERA, ELITE, IMAGE CORRECTED, HEATED, ULTRA-LOW-LIGHT, PAL
5278	BE-901C	CAMERA, ELITE, IMAGE CORRECTED, HEATED, ULTRA-LOW-LIGHT, NTSC

TABLE 2: CAMERA KIT CONTENTS

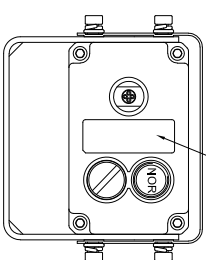
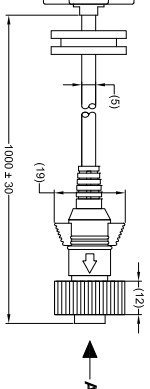
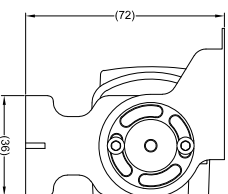
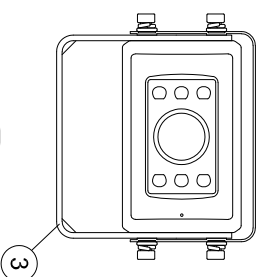
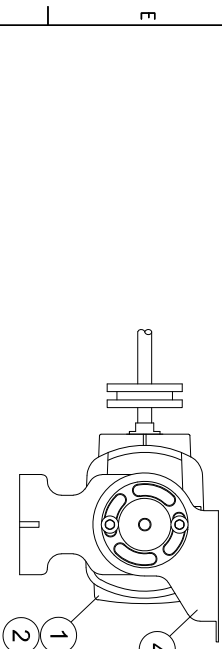
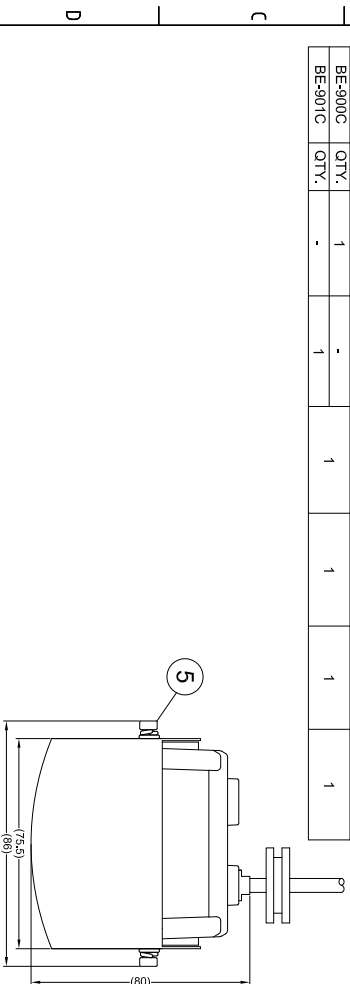
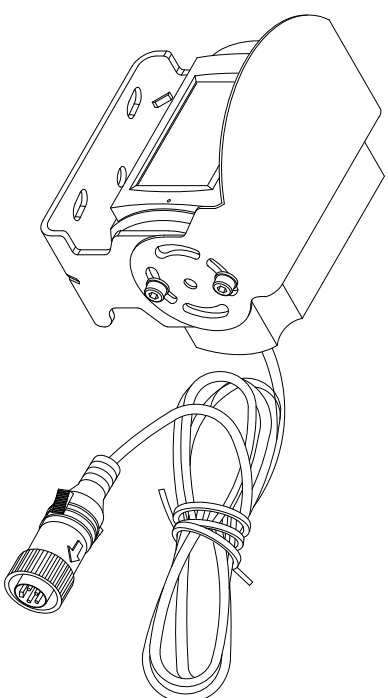
ITEM	(1)	(2)	(3)	(4)	(5)	(6)
PART NO.	5281	5282	3244A	3245	3246	5285
MODEL NO.	BE-900C-C	BE-901C-C	BE-89XC/BE-X OXC-BKT	BE-89XC/BE-X0 XC-SS	BE-8/2XXC-F1 X	BE-9XXC-I-G
DESCRIPTION	CAMERA, ELITE, IMAGE CORRECTED, HEATED, PAL, AUDIO	CAMERA, ELITE, IMAGE CORRECTED, HEATED, NTSC, AUDIO	BE-8XXC/BE2 XXC SERIES BRACKET	BE-8XXC/BE2 XXC SERIES SUNSHIELD	BE-8XXC/BE2 XXC SERIES FLARING KIT	BE-9XXC SERIES INSTALLATION GUIDE (NOT SHOWN)
BE-900C QTY.	1	-	1	1	1	1
BE-901C QTY.	-	1	-	-	-	-

VIEW A



4 PIN MINI DIN MALE MATING FACE

PN.#	WIRE COLOUR	DESCRIPTION
1	YELLOW	VIDEO
2	RED	+12V
3	BLUE	N.C
4	WHITE	AUDIO
5	BLACK/SHIELD	GND



- NOTES:
1. REFER TO COMPONENT DRAWINGS FOR COMPONENT DETAILS.
  2. FOR PRODUCT LABEL AND PACKAGING DETAILS REFER TO MASTER BOM.
  3. FOR INSTALLATION DETAILS REFER TO INSTALLATION GUIDE.
  4. ANY CUSTOMER MODIFICATION OF THIS PRODUCT CAUSING SUBSEQUENT FAILURE IS NOT A LIABILITY OF BRIGADE ELECTRONICS PLC.

PROPRIETARY NOTICE

THIS DESIGN AND TECHNICAL INFORMATION APPEARING ON THIS DRAWING IS THE PROPERTY OF BRIGADE ELECTRONICS, AND IS DISCLOSED IN CONFIDENCE. IT IS NOT TO BE COPIED, REPRODUCED, REVEALED TO OR EXPLOITED BY OTHERS, EITHER IN WHOLE OR IN PART WITHOUT THE EXPRESS WRITTEN CONSENT OF BRIGADE ELECTRONICS.

Revision Notes			
R1 -	Drawn -	Checked -	Approved -
AP.A -			Date -

Assembly PI Approval T.LIM (18/05/18)	Approved by B.JOHN	Checked by W.BEAZLEY	Drawn by M.BUTLER
Angle of Projection	Units mm	Scale N/A	Released 24/05/18

Status RELEASED	Part No SEE TABLE 1	BE-90XC
--------------------	------------------------	---------

**BRIGADE**  
www.brigade-electronics.com

